

# SCREEN DRYING CABINETS

## DRI-VAULT

Dry your screens securely in the 10 or 24 screen Dri-Vault. Variable heat and powerful filtered air flow can have your screens ready for exposure, in as little as **20 MINUTES!\***



**VDC-253624**  
24 Screen Drying Cabinet



- RELIABLE** 3 Year Warranty
- HEAVY DUTY** Industrial stainless steel finned heater(s)
- CAPACITY** Holds ten (10) or twenty four (24) 25" x 36" (63.6 x 91.4 cm) screens of any type
- POWERFUL** One (1) 177 CFM (5 CMM) air flow blower or Two (2) 290 CFM (14.2 CMM) air flow blowers
- CONSISTENT** Pressurized cabin with positive air flow keeps out contaminants even if an air leak occurs
- EFFECTIVE** Screens sit horizontal on removable shelves (angled to provide edge contact only)
- SECURE** One (1) sealed latching door 10 screen or two (2) individually sealed latching doors on the 24 screen unit
- CONTROL** 10 screen cabinet has Hi-Low heat adjustment OR the 24 screen cabinet has breaker on/off switch, pilot light, digital temperature control, both have ability to run air only or variable heat.
- FAST** Dries emulsion as quickly as 20 minutes\*
- EFFICIENT** 4" (10 cm) exhaust duct for contaminated air removal
- PRECISE** Light tight heavy duty double wall
- EASY** Simple to clean or replace filtered air intake

### Options

- Stainless steel shelves for rustproof drying
- 240 Volt (standard on 24 screen cabinet)
- Expanded Depth for MHM style screens with pins (24 screen cabinet)
- Digital Temperature Controller for 10 screen Dri-Vaults

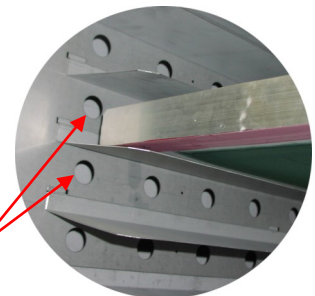
*E2331 exposure unit fits perfectly on top of 10 screen drying cabinet. Foot p/n 08-08-018 required*



**NEW LARGER SIZE!** **VDC-253610**  
10 Screen Drying Cabinet

**3 YEAR WARRANTY**

Dynamic Air Flow above and below the screens ensures consistent & even drying.



\*Drying times will vary. Humidity, thickness and type of emulsion used, and size of screens are factors in Dri-Vault curing time.



# Exposing Units

## Technical Specifications



**MADE IN U.S.A.**

	E2-2124 (LED) E1-2124 (Fluorescent)	E2-2331 (LED) E2331 (Fluorescent)	E2-4731 (LED) E4731 (Fluorescent)	E2-4131 (LED) Pro Series
Overall Warranty	3 Year	3 Year	3 Year	3 Year
Maximum Screen Size	21" x 24" (53 x 61 cm)	23" x 31" (56 x 78.7 cm)	47" x 31" (119.4 x 78.7 cm) or (2) 23" x 31" (56 x 78.7 cm)	41" x 31" (104.1 x 78.7 cm) or (2) 20" x 24" (50.8 x 61 cm)
Image Area	15" x 18" (38.1 x 45.7 cm)	23" x 33" (58.42 x 83.3 cm)	44" x 33" (111.8 x 83.3 cm)	35" x 28" (88.9 x 71.1 cm)
Bulbs (LED)	Qty. (3) 18" (61 cm) LED light bars	Qty. (5) 30" (76 cm) LED light bars (Optional 7 bars)	Qty. (11) 30" (76 cm) LED light bars	Qty. (7) 30" (76 cm) LED light bars
Bulbs (Fluorescent)	Qty. (4) 20 watt T12-BL, black UV	Qty. (6) 40 watt F28T12BLHO, Black UV fluorescent 28" (71cm) long	Qty. (12) 40 watt F28T12BLHO, Black UV fluorescent 28" (71cm) long	N/A
Vacuum Pump, Oil-less Diaphragm	1/16 HP 24 hg Max	1/16 HP 24 hg Max	1/4 HP High Output 23 Hg Max	1/4 HP High Output 23 Hg Max
Power & Plug Spec International Available	120V 3.5A NEMA 5-15P plug 240V 2A NEMA 6-15P plug	120V / 60 HZ / 3.5A NEMA 5-15P 240V / 50/60 HZ / 2A NEMA 6-15P	120V / 60 HZ / 6.5A (E4731) 120V / 60 HZ / 8A (E2-4731) NEMA 5-15P 240V / 50/60 HZ / 4A NEMA 6-15P	120V / 60 HZ / 8A (E2-4731) NEMA 5-15P 240V / 50/60 HZ / 4A NEMA 6-15P
Overall Depth x Width x Height	Lid Closed 32.75" x 34.75" x 14" (83 x 88 x 36 cm) Lid Open 32.75" x 34.75" x 28" (83 x 88 x 71 cm)	Lid Closed 41.6 x 36.2 x 48.3" (105.7 x 92 x 122.7 cm) Lid Open 41.6 x 36.2 x 68.2" (105.7 x 92 x 173 cm)	Lid Closed 41.6 x 60.2 x 48.3" (105.7 x 153 x 122.7 cm) Lid Open 41.6 x 60.2 x 68.2" (105.7 x 153 x 173 cm)	Lid Closed 41.6 x 53.2 x 50.3" (105.7 x 135.1 x 127.8cm) Lid Open 41.6 x 53.2 x 70.2" (105.7 x 135.1 x 178.3 cm)
Overall Weight - Uncrated	100 lbs (45.4 kg)	180 lbs (81.6 kg)	280 lbs (127 kg)	325 lbs (147.4 kg)
Shipping Weight*	223 lbs (101 kg) w/ Utility Cart (UC-1000) 483 lbs (219 kg)	386 lbs (175 kg) w/ drying cabinet VDC253610 570 lbs (259 kg)	494 lbs (224 kg) w/ drying cabinet VDC513610 851 lbs (386 kg)	456 lbs (266.8 kg)
Shipping Dimensions*	43" x 43" x 17" (109 x 109 x 43 cm) w/ Utility Cart (UC-1000) 43" x 43" x 35" (109 x 109 x 89 cm)	48" x 45" x 47" (122 x 114.3 x 79 cm) w/ drying cabinet VDC253610 49" x 45" x 49" (124 x 114 x 124 cm)	69" x 48" x 47" (175 x 122 x 79 cm) w/ drying cabinet VDC513610 69" x 48" x 69" (175 x 122 x 124 cm)	60" x 48" x 48" (152.4 x 122 x 122 cm)

# Drying Cabinets

## Technical Specifications



**MADE IN U.S.A.**

Dri-Vault - Drying Cabinets			
	VDC-253610	VDC-2536-24	VDC-513610
Defect Warranty	3 Year	3 Year	3 Year
Maximum # of Screens	10 @ maximum size	24 @ maximum size	(10) @ 51" x 36" / (20) @ 25" x 36"
Maximum Screen Size	25" x 36" x 1.625" (63.5 x 91.4 x 4.12 cm)	25" x 36" x 1.625" (63.5 x 91.4 x 5.7 cm)	(10 screens) @ 51" x 36" (20 screens) @ 25" x 36"
Smallest Screen Width	18" (46 cm)	18" (46 cm)	No minimum size due to adjustable center tree
Blower (Free Air)	177 CFM (5 cmm) <u>120v</u> or 290 CFM (8.2cmm) <u>240volt</u>	580 CFM (16.4 CMM)	290 CFM (8.2 CMM)
Overall Depth x Width x Height	39.5" (100 cm) x 34.75" (88 cm) x 29" (74 cm) / 32" (81 cm) w/ optional casters	39.5" (100 cm) x 34.75" (88 cm) x 81" (206 cm)	37.9" (96.3 cm) x 62.5" (159.1cm) x 32.3" (81.9cm)
Heater Wattage	1,250 Watts 120 Volts or 1,550 Watts 240 Volts	3,100 Watts 240 Volts	1,550 Watts @ 240 Volts
Electrical Power	120V / 10A / 1 Ph. / 60 HZ / NEMA 5-15P plug or 240V / 6A / 1 Ph. / 50/60 HZ / NEMA 6-15P plug	240V / 16A / 1 Ph. / 50/60 HZ / NEMA 6-20P plug	240V / 6A / 1 Ph. / 50/60 HZ / NEMA 6-15P plug
Shipping Weight*	367 lbs (166.5 kg)	670 lbs (303 kg)	573 lbs (277 kg)
Shipping Dimensions*	43" x 43" x 48" [109 x 109 x 122 cm]	43" x 43" x 84" [109 x 109 x 213 cm]	69" x 48" x 48" (175.3 x 122 x 122 cm)

1 in = 2.54 cm  
1 lb = 0.454 kg

\*All shipping weights and dimensions are for continental US shipping only. Call for other shipping specifications. Ex-works from Allentown PA.

All\_Exposers&Drying\_Cabinets\_0414